



Cambridge International AS & A Level

CANDIDATE
NAME

--

CENTRE
NUMBER

--	--	--	--	--

CANDIDATE
NUMBER

--	--	--	--



FURTHER MATHEMATICS

9231/32

Paper 3 Further Mechanics

May/June 2020

1 hour 30 minutes

You must answer on the question paper.

You will need: List of formulae (MF19)

INSTRUCTIONS

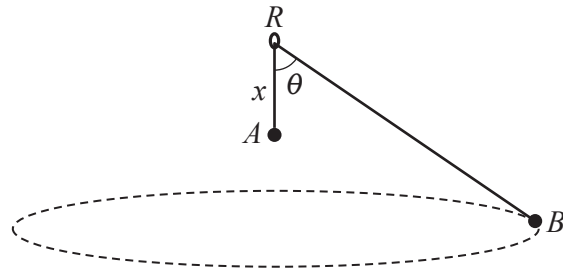
- Answer **all** questions.
- Use a black or dark blue pen. You may use an HB pencil for any diagrams or graphs.
- Write your name, centre number and candidate number in the boxes at the top of the page.
- Write your answer to each question in the space provided.
- Do **not** use an erasable pen or correction fluid.
- Do **not** write on any bar codes.
- If additional space is needed, you should use the lined page at the end of this booklet; the question number or numbers must be clearly shown.
- You should use a calculator where appropriate.
- You must show all necessary working clearly; no marks will be given for unsupported answers from a calculator.
- Give non-exact numerical answers correct to 3 significant figures, or 1 decimal place for angles in degrees, unless a different level of accuracy is specified in the question.
- Where a numerical value for the acceleration due to gravity (g) is needed, use 10 ms^{-2} .

INFORMATION

- The total mark for this paper is 50.
- The number of marks for each question or part question is shown in brackets [].

This document has **16** pages. Blank pages are indicated.

2



A light inextensible string of length a is threaded through a fixed smooth ring R . One end of the string is attached to a particle A of mass $3m$. The other end of the string is attached to a particle B of mass m . The particle A hangs in equilibrium at a distance x vertically below the ring. The angle between AR and BR is θ (see diagram). The particle B moves in a horizontal circle with constant angular speed $2\sqrt{\frac{g}{a}}$.

Show that $\cos \theta = \frac{1}{3}$ and find x in terms of a . [5]

.....

.....

.....

.....

.....

.....

.....

.....

.....

.....

.....

.....

.....

.....

.....

.....

.....

.....

.....

.....

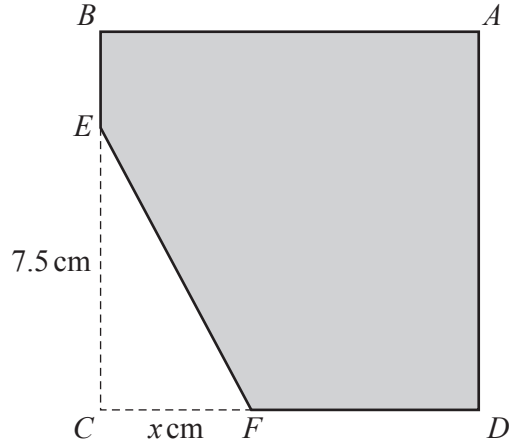
.....

.....

.....

.....

A series of horizontal dotted lines for writing.



A uniform square lamina $ABCD$ has sides of length 10 cm. The point E is on BC with $EC = 7.5$ cm, and the point F is on DC with $CF = x$ cm. The triangle EFC is removed from $ABCD$ (see diagram). The centre of mass of the resulting shape $ABEFD$ is a distance \bar{x} cm from CB and a distance \bar{y} cm from CD .

- (a) Show that $\bar{x} = \frac{400 - x^2}{80 - 3x}$ and find a corresponding expression for \bar{y} . [4]

.....

.....

.....

.....

.....

.....

.....

.....

.....

.....

.....

.....

.....

.....

.....

.....

.....

.....

.....

.....

.....

The shape $ABEFD$ is in equilibrium in a vertical plane with the edge DF resting on a smooth horizontal surface.

- (b) Find the greatest possible value of x , giving your answer in the form $a + b\sqrt{2}$, where a and b are constants to be determined. [3]

.....

.....

.....

.....

.....

.....

.....

.....

.....

.....

.....

.....

.....

.....

.....

.....

.....

.....

.....

.....

.....

.....

.....

Additional Page

If you use the following lined page to complete the answer(s) to any question(s), the question number(s) must be clearly shown.

.....

.....

.....

.....

.....

.....

.....

.....

.....

.....

.....

.....

.....

.....

.....

.....

.....

.....

.....

.....

.....

.....

.....

.....

.....

.....

.....

.....

Permission to reproduce items where third-party owned material protected by copyright is included has been sought and cleared where possible. Every reasonable effort has been made by the publisher (UCLES) to trace copyright holders, but if any items requiring clearance have unwittingly been included, the publisher will be pleased to make amends at the earliest possible opportunity.

To avoid the issue of disclosure of answer-related information to candidates, all copyright acknowledgements are reproduced online in the Cambridge Assessment International Education Copyright Acknowledgements Booklet. This is produced for each series of examinations and is freely available to download at www.cambridgeinternational.org after the live examination series.

Cambridge Assessment International Education is part of the Cambridge Assessment Group. Cambridge Assessment is the brand name of the University of Cambridge Local Examinations Syndicate (UCLES), which itself is a department of the University of Cambridge.